

地 番 3060-6, 3060-9, 3060-10
3060-11, 3060-12, 3060-13
3060-14, 3060-15, 3060-16

地 積 測 量 図 ①/②

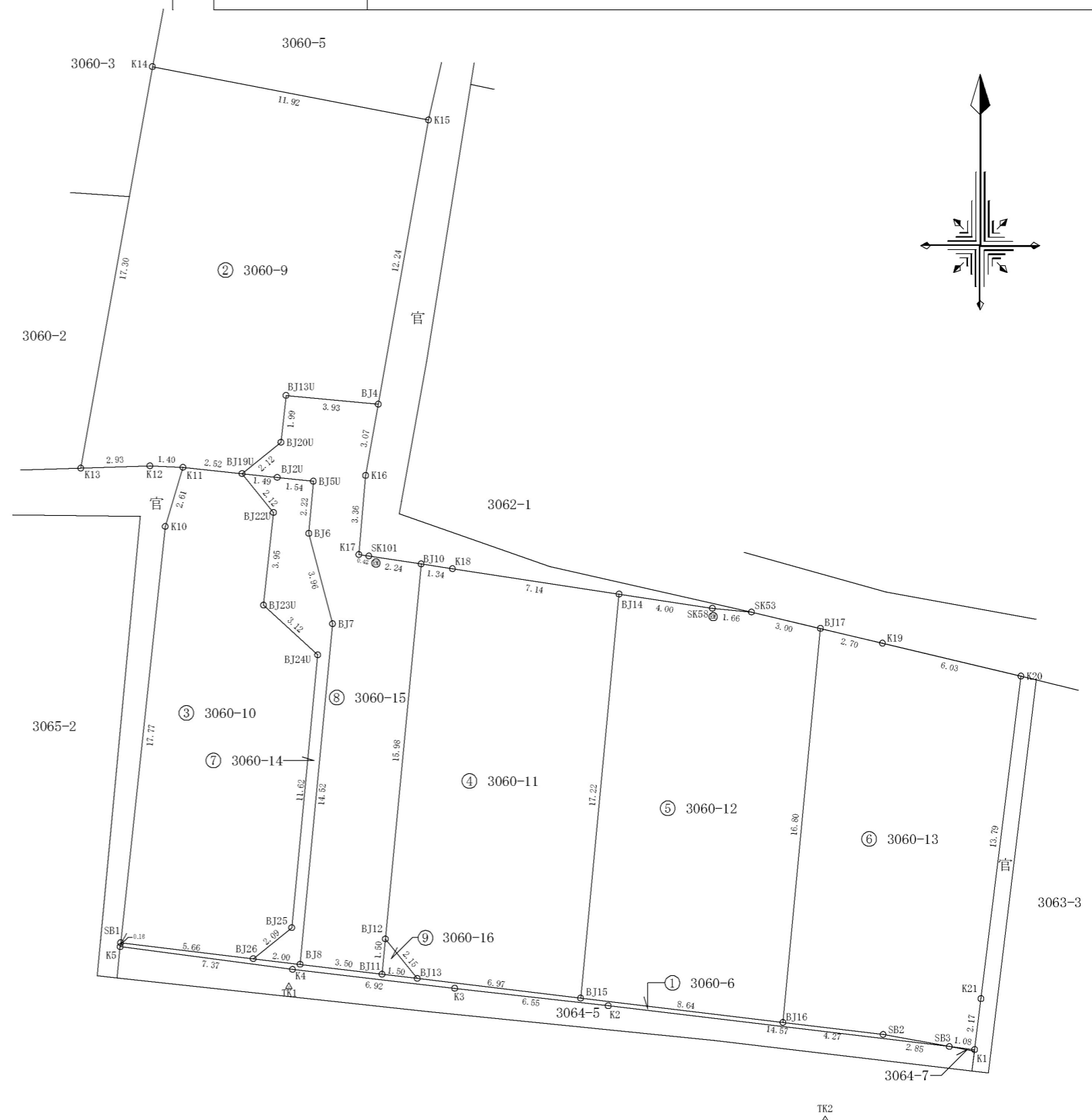
土地の所在 富士市伝法字三日市

求積表

地 番	① 3060-6			
NO	Xn	Yn	Yn+1-Yn-1	Xn · (Yn+1-Yn-1)
SB1	-92314.434	15693.408	5.642	-520838.036628
BJ26	-92315.111	15699.032	7.613	-702794.940043
BJ8	-92315.351	15701.021	5.465	-504503.393215
BJ11	-92315.770	15704.497	4.970	-458809.376900
BJ13	-92315.949	15705.991	8.423	-777577.238427
BJ15	-92316.784	15712.920	15.510	-1431833.319840
BJ16	-92317.818	15721.501	12.830	-1184437.604940
SB2	-92318.329	15725.750	7.060	-651767.402740
SB3	-92318.841	15728.561	-11.659	1076345.367219
K2	-92317.109	15714.091	-20.980	1936812.946820
K3	-92316.367	15707.581	-13.392	1236300.786864
K4	-92315.567	15700.699	-14.191	1310050.211297
K5	-92314.601	15693.390	-7.291	673065.755891
合計				13.755358
合計面積				6.8776790
地積				6.87 m ²

地 番	② 3060-9			
NO	Xn	Yn	Yn+1-Yn-1	Xn · (Yn+1-Yn-1)
K14	-92277.248	15694.757	14.751	-1361181.685248
K15	-92279.511	15706.469	9.580	-884037.715380
BJ4	-92291.574	15704.337	-6.045	557902.564830
BJ13U	-92291.202	15700.424	-4.126	380793.499452
BJ20U	-92293.190	15700.211	-1.864	172034.506160
BJ19U	-92294.522	15698.560	-4.159	383852.916998
K11	-92294.253	15696.052	-3.909	360778.234977
K12	-92294.190	15694.651	-4.334	400003.019460
K13	-92294.289	15691.718	0.106	-9783.194634
合計				362.146615
合計面積				181.0733075
地積				181.07 m ²

地 番	③ 3060-10			
NO	Xn	Yn	Yn+1-Yn-1	Xn · (Yn+1-Yn-1)
K11	-92294.253	15696.052	3.258	-300694.676274
BJ19U	-92294.522	15698.560	3.839	-354318.669958
BJ22U	-92296.173	15699.891	0.910	-83989.517430
BJ23U	-92300.103	15699.470	1.879	-173431.893537
BJ24U	-92302.217	15701.770	1.197	-110485.753749
BJ25	-92313.794	15700.667	-2.738	252755.167972
BJ26	-92315.111	15699.032	-7.259	670115.390749
SB1	-92314.434	15693.408	-3.730	344332.838820
K10	-92296.763	15695.302	2.644	-244032.641372
合計				250.245221
合計面積				125.1226105
地積				125.12 m ²



筆界標略号 S…石杭, C…コンクリート杭, P…プラスチック杭, R…金属釘, M…刻ミ, RM…金属標 単位m

作成者 富士市青島町5番地の2
土地家屋調査士 榛葉 岳洋
(令和8年3月31日作成) 縮尺 1/250

申請人 心建設株式会社
代表取締役 宮越和昭 縮尺 1/250

地番	3060-6, 3060-9, 3060-10 3060-11, 3060-12, 3060-13 3060-14, 3060-15, 3060-16
土地の所在	富士市伝法字三日市

地積測量図 2/2

地番	④ 3060-11			
NO	Xn	Yn	Yn+1-Yn-1	Xn · (Yn+1-Yn-1)
BJ13	-92315.949	15705.991	-8.280	764376.057720
BJ12	-92314.272	15704.640	0.164	-15139.540608
BJ10	-92298.355	15706.155	2.846	-262681.118330
K18	-92298.558	15707.486	8.397	-775030.991526
BJ14	-92299.635	15714.552	5.434	-501556.216590
BJ15	-92316.784	15712.920	-8.561	790323.987824
		合計		292.178490
		合計面積		146.0892450
		地積		146.08 m ²

地番	⑤ 3060-12			
NO	Xn	Yn	Yn+1-Yn-1	Xn · (Yn+1-Yn-1)
BJ14	-92299.635	15714.552	5.589	-515862.660015
SK58	-92300.238	15718.509	5.617	-518450.436846
SK53	-92300.397	15720.169	4.584	-423105.019848
BJ17	-92301.093	15723.093	1.332	-122945.055876
BJ16	-92317.818	15721.501	-10.173	939149.162514
BJ15	-92316.784	15712.920	-6.949	641509.332016
		合計		295.321945
		合計面積		147.6609725
		地積		147.66 m ²

地番	⑥ 3060-13			
NO	Xn	Yn	Yn+1-Yn-1	Xn · (Yn+1-Yn-1)
BJ17	-92301.093	15723.093	4.225	-389972.117925
K19	-92301.719	15725.726	8.505	-785026.120095
K20	-92303.116	15731.598	4.177	-385550.115532
K21	-92316.807	15729.903	-1.963	181217.892141
K1	-92318.970	15729.635	-1.342	123892.057740
SB3	-92318.841	15728.561	-3.885	358658.697285
SB2	-92318.329	15725.750	-7.060	651767.402740
BJ16	-92317.818	15721.501	-2.657	245288.442426
		合計		276.138780
		合計面積		138.0693900
		地積		138.06 m ²

基本三角点等の名称	X座標	Y座標	備考
3A152	街区多角点節点	-92292.145	15766.632
3A153	街区多角点節点	-92358.288	15760.088
TK1	登記基準点	-92316.304	15700.548
TK2	登記基準点	-92321.948	15723.297

測量年月日	令和8年 3月9日
測地系	世界測地系
座標系	VIII系

地番	⑦ 3060-14			
NO	Xn	Yn	Yn+1-Yn-1	Xn · (Yn+1-Yn-1)
BJ8	-92315.351	15701.021	-3.365	310641.156115
BJ26	-92315.111	15699.032	-0.354	32679.549294
BJ25	-92313.794	15700.667	2.738	-252755.167972
BJ24U	-92302.217	15701.770	-1.197	110485.753749
BJ23U	-92300.103	15699.470	-1.879	173431.893537
BJ22U	-92296.173	15699.891	-0.910	83989.517430
BJ19U	-92294.522	15698.560	0.160	-14767.123520
BJ2U	-92294.682	15700.051	3.023	-279006.823686
BJ5U	-92294.846	15701.583	1.341	-123767.388486
BJ6	-92297.058	15701.392	0.814	-75129.805212
BJ7	-92300.895	15702.397	-0.371	34243.632045
		合計		45.193294
		合計面積		22.5966470
		地積		22.59 m ²

地番	⑧ 3060-15			
NO	Xn	Yn	Yn+1-Yn-1	Xn · (Yn+1-Yn-1)
BJ11	-92315.770	15704.497	-3.619	334090.771630
BJ8	-92315.351	15701.021	-2.100	193862.237100
BJ7	-92300.895	15702.397	0.371	-34243.632045
BJ6	-92297.058	15701.392	-0.814	75129.805212
BJ5U	-92294.846	15701.583	-1.341	123767.388486
BJ2U	-92294.682	15700.051	-3.023	279006.823686
BJ19U	-92294.522	15698.560	0.160	-14767.123520
BJ20U	-92293.190	15700.211	1.864	-172034.506160
BJ13U	-92291.202	15700.424	4.126	-380793.499452
BJ4	-92291.574	15704.337	3.378	-311760.936972
K16	-92294.600	15703.802	-0.821	75773.866600
K17	-92297.956	15703.516	0.136	-12552.522016
SK101	-92298.017	15703.938	2.639	-243574.466863
BJ10	-92298.355	15706.155	0.702	-64793.445210
BJ12	-92314.272	15704.640	-1.658	153057.062976
		合計		167.823452
		合計面積		83.9117260
		地積		83.91 m ²

地番	⑨ 3060-16			
NO	Xn	Yn	Yn+1-Yn-1	Xn · (Yn+1-Yn-1)
BJ13	-92315.949	15705.991	-0.143	13201.180707
BJ11	-92315.770	15704.497	-1.351	124718.605270
BJ12	-92314.272	15704.640	1.494	-137917.522368
		合計		2.263609
		合計面積		1.1318045
		地積		1.13 m ²

作成者	富士市青島町5番地の2 土地家屋調査士 榛葉 岳洋 (令和8年3月31日作成)	縮尺		申請人	心建設株式会社 代表取締役 宮越和昭	縮尺	
-----	---	----	--	-----	-----------------------	----	--