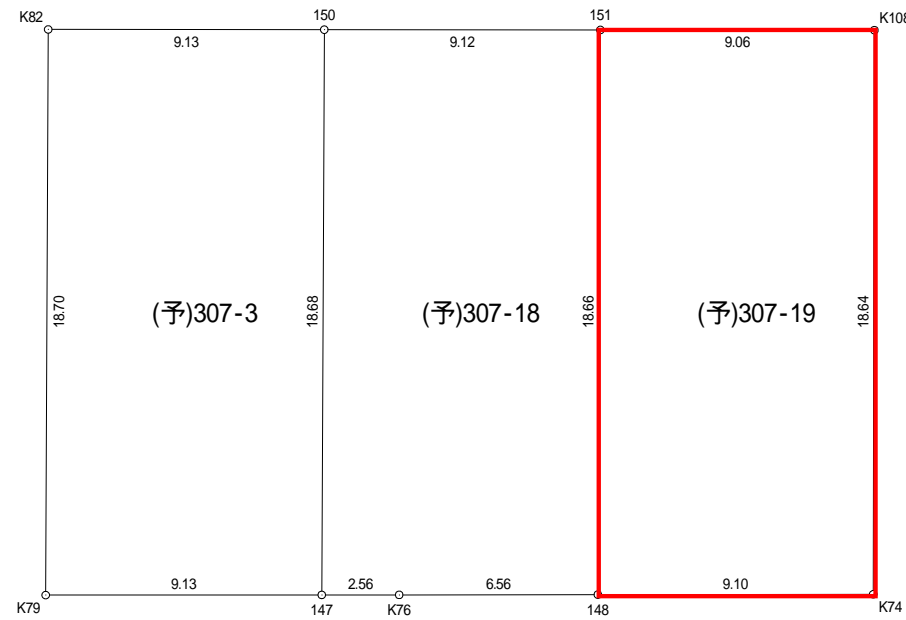
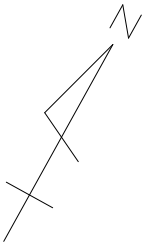


分筆予定求積図 S=1:250



地番 (予)307-3				
NO	Xn	Yn	Yn+1-Yn-1	Xn · (Yn+1-Yn-1)
150	-95735.476	12996.976	16.976	-1625205.440576
147	-95751.861	13005.962	1.003	-96039.116583
K79	-95756.293	12997.979	-16.976	1625558.829968
K82	-95739.896	12988.986	-1.003	96027.115688
合計				341.388497
合計面積				170.6942485
地積				170.69 m ²

地番 (予)307-18				
NO	Xn	Yn	Yn+1-Yn-1	Xn · (Yn+1-Yn-1)
150	-95735.476	12996.976	-0.997	95448.269572
151	-95731.057	13004.965	16.966	-1624173.113062
148	-95747.426	13013.942	3.236	-309838.670536
K76	-95750.618	13008.201	-7.980	764089.931640
147	-95751.861	13005.962	-11.225	1074814.639725
合計				341.057339
合計面積				170.5286695
地積				170.52 m ²

地番 (予)307-19				
NO	Xn	Yn	Yn+1-Yn-1	Xn · (Yn+1-Yn-1)
151	-95731.057	13004.965	-1.047	100230.416679
K108	-95726.671	13012.895	16.938	-1621418.353398
K74	-95743.000	13021.903	1.047	-100242.921000
148	-95747.426	13013.942	-16.938	1621769.901588
合計				339.043869
合計面積				169.5219345
地積				169.52 m ²

5.00
原図
A3 5.00


 株式会社 鈴木工務所
 富士市八代町10番12号
 TEL 0545-51-0875(代)
 FAX 0545-53-6293
 URL <http://www.5064.jp>